

Cyberspecimens

from creation
to curation
and publication

Sarah Faulwetter

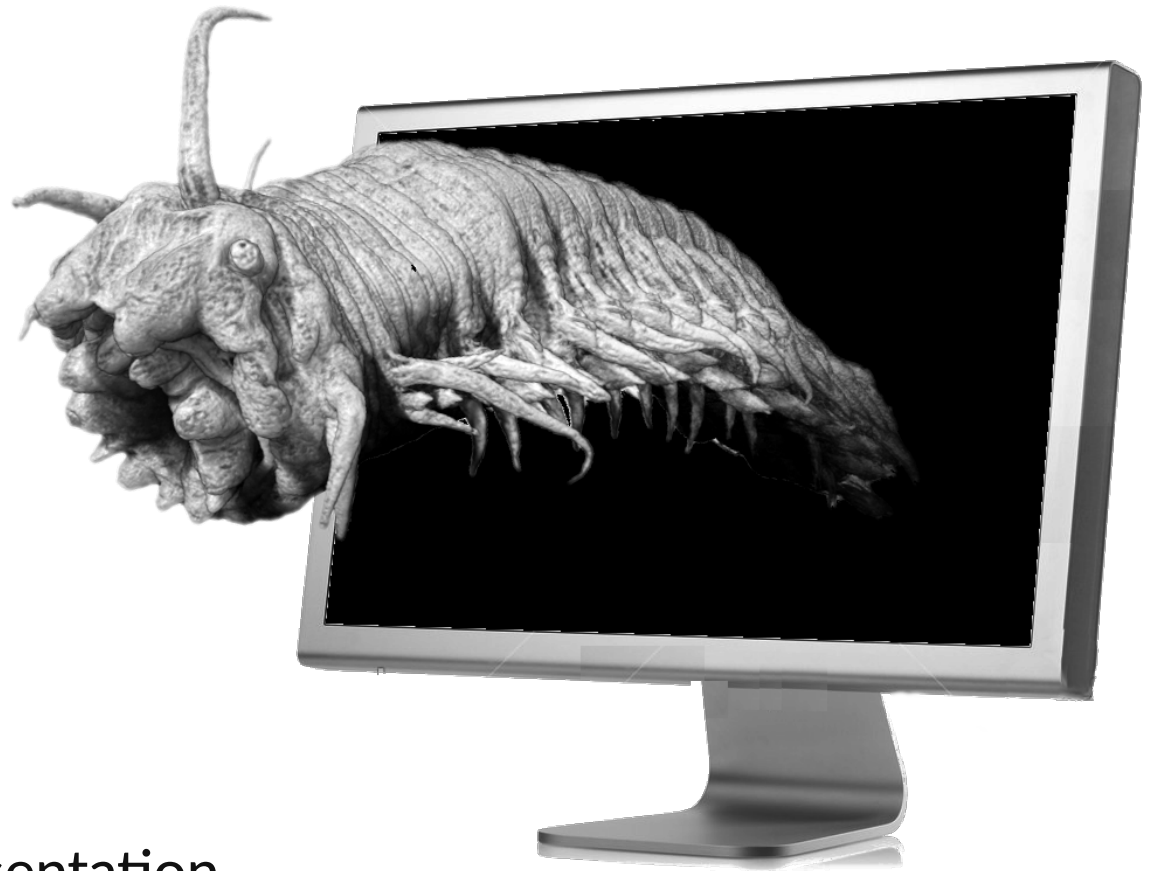
 @sarsifa



Cyberspecimen

Cybertype

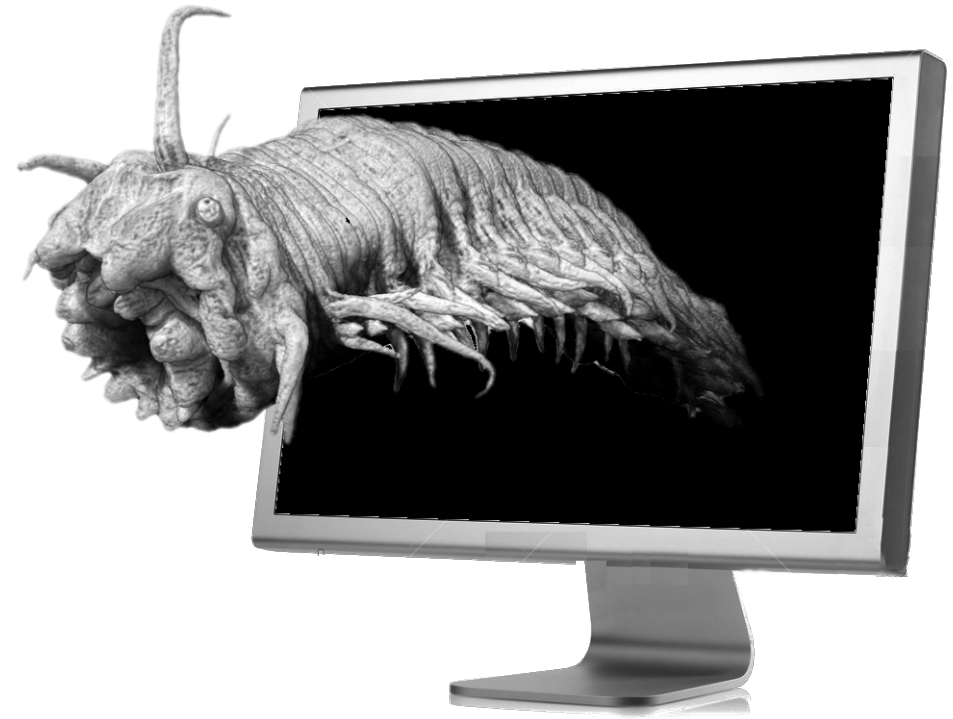
Avatar



Accurate, virtual (3D) representation
of the physical specimen



By Hannes Grobe/AWI CCBY 3.0 via Wikimedia Commons



type material



cybertype

Godfray, HCJ (2007)
Linnaeus in the information age.
Nature 446: 259–260

Volume data
(internal & external
structures)



X-ray tomography
/ micro-CT

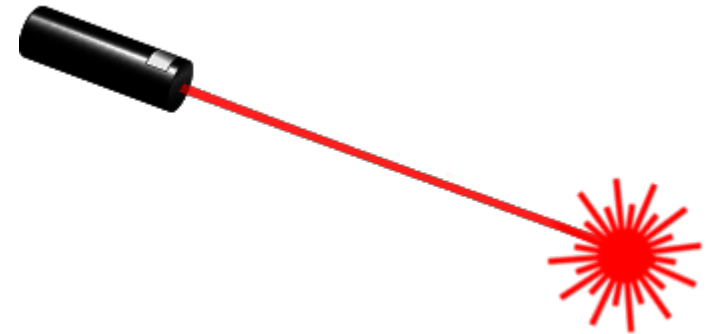


Magnet Resonance
Imaging (MRI)

Surface data
(external structures)



Photogrammetry



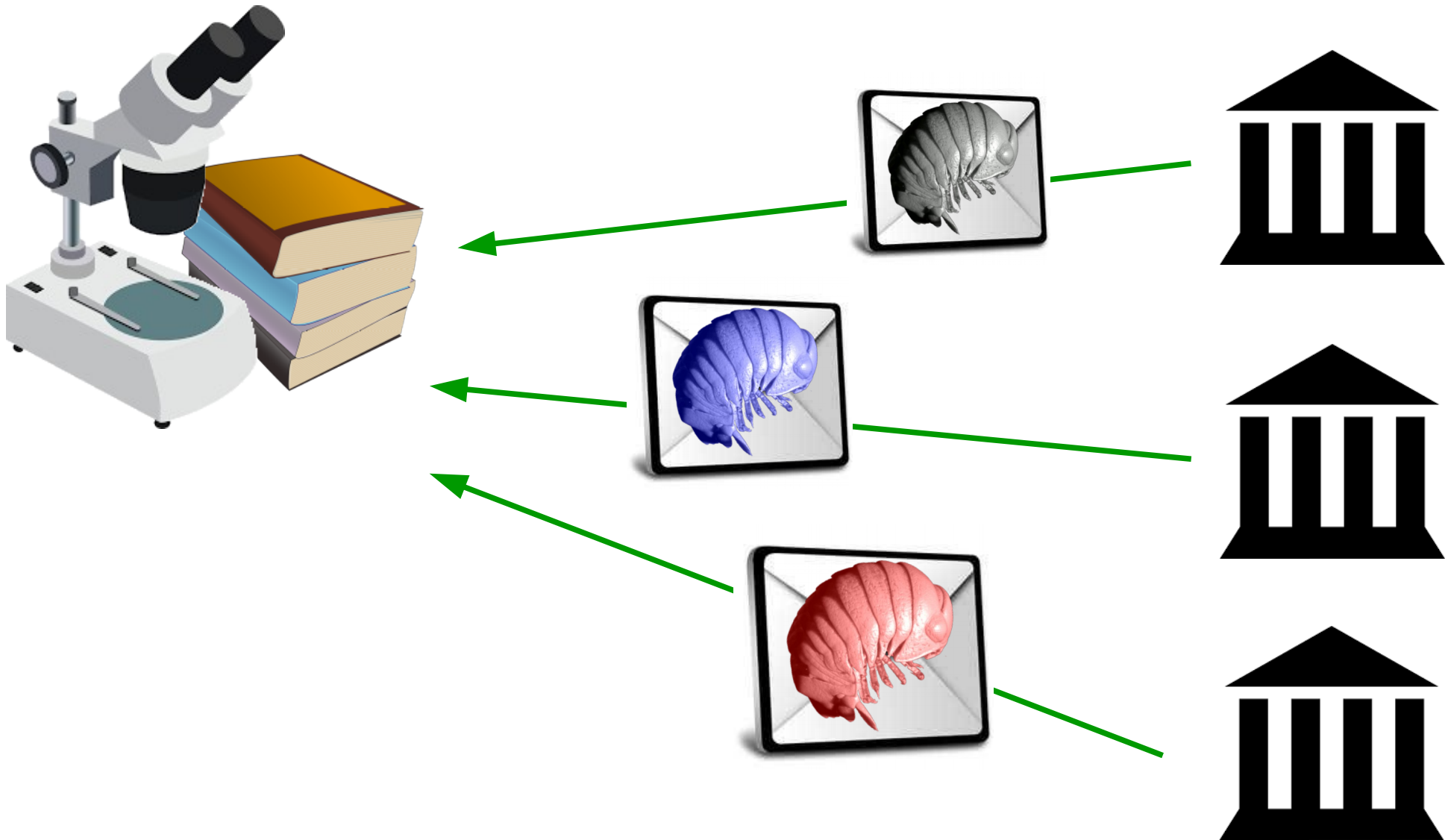
Laser surface scanning

Why cyberspecimens?

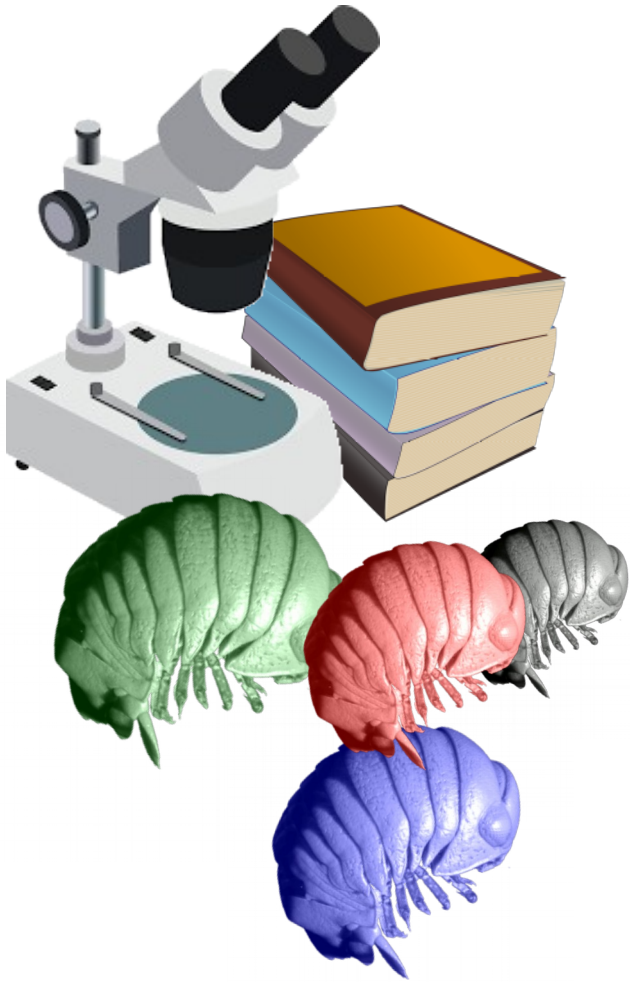
The taxonomic bottleneck



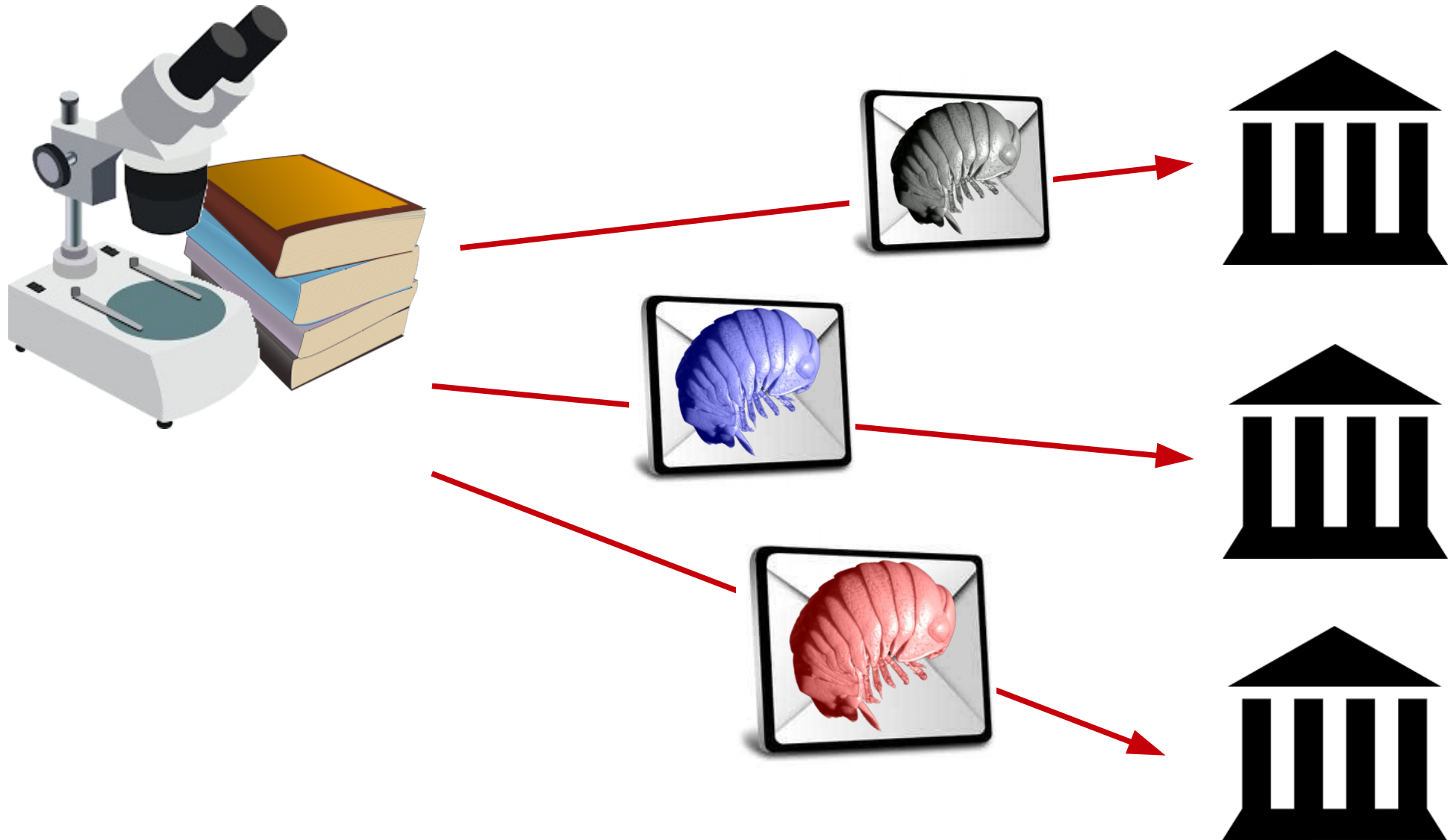
The taxonomic bottleneck



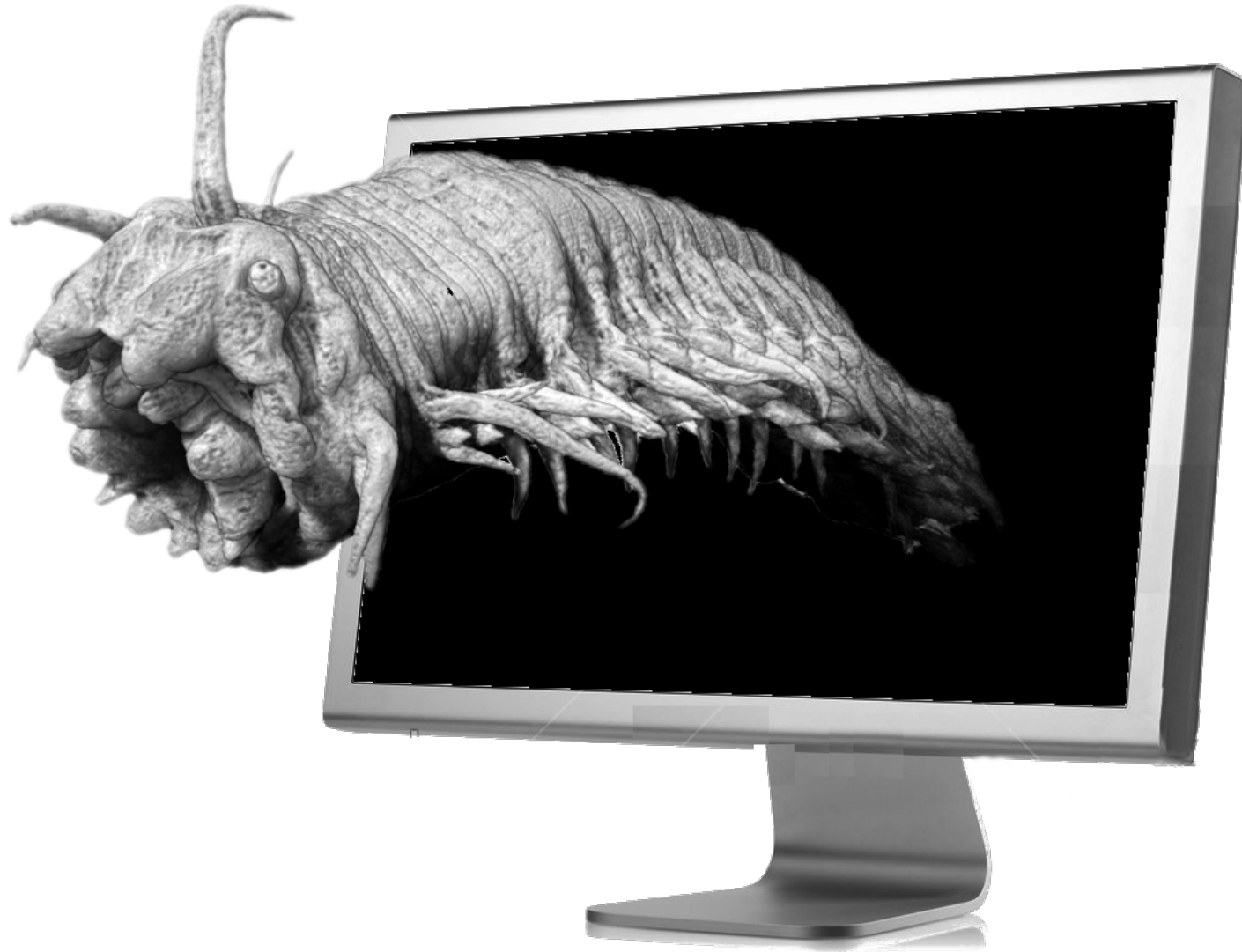
The taxonomic bottleneck



The taxonomic bottleneck

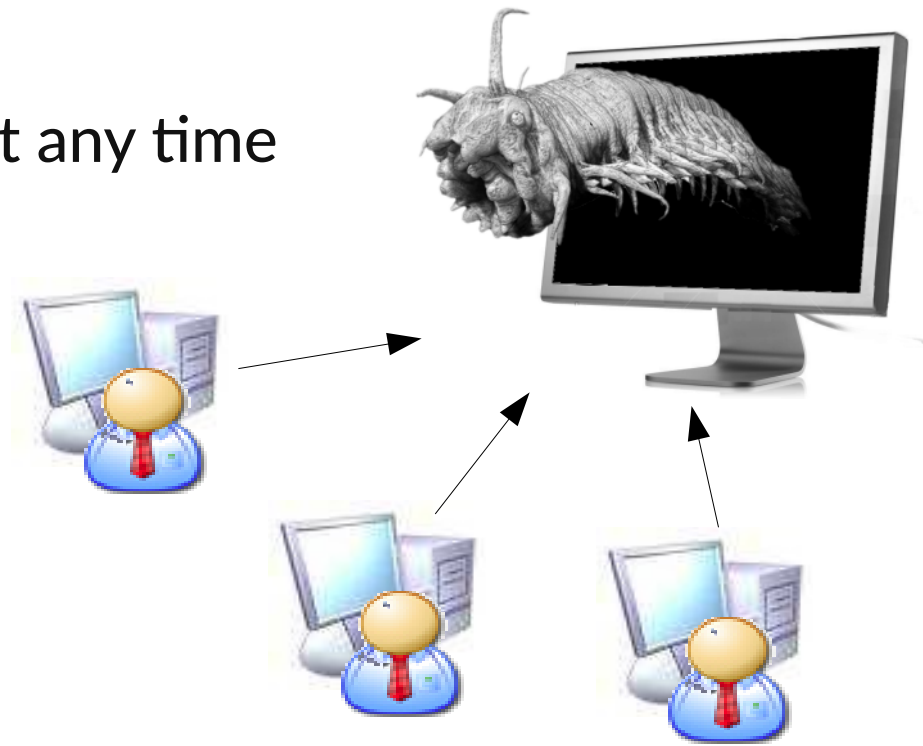


Cybertype



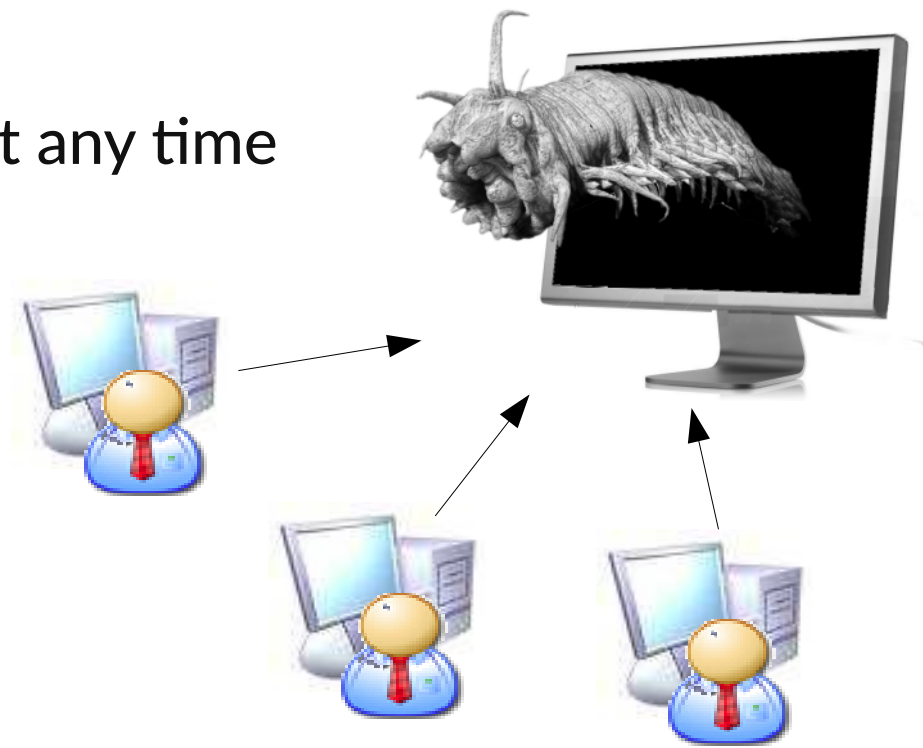
instant access to museum material at any time

...simultaneously, by multiple researchers from any place



instant access to museum material at any time

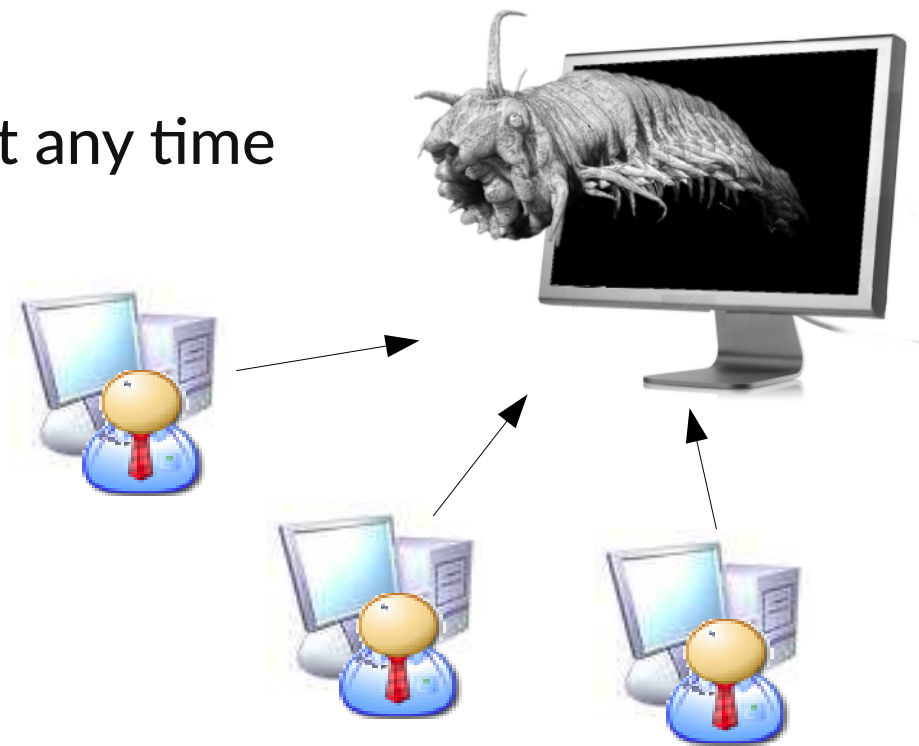
...simultaneously, by multiple researchers from any place



protection of valuable specimens from damage or loss

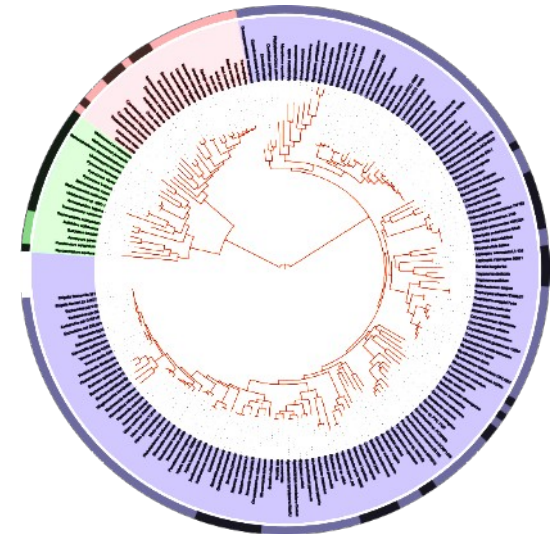
instant access to museum material at any time

...simultaneously, by multiple researchers from any place



protection of valuable specimens from damage or loss

digital format → usage by computers
→ new types of analyses



A cyberspecimen should...

- I provide information of the same **accuracy and reliability** as the physical specimen
- II be created **without affecting** the **morphological, anatomical and molecular identity** of the physical specimen
- III be **linked to the original** specimen (which can be consulted if in doubt)
- IV be **retrievable**

A cyberspecimen should...



provide information of the same **accuracy and reliability** as the physical specimen

II

be created **without affecting** the **morphological, anatomical and molecular identity** of the physical specimen

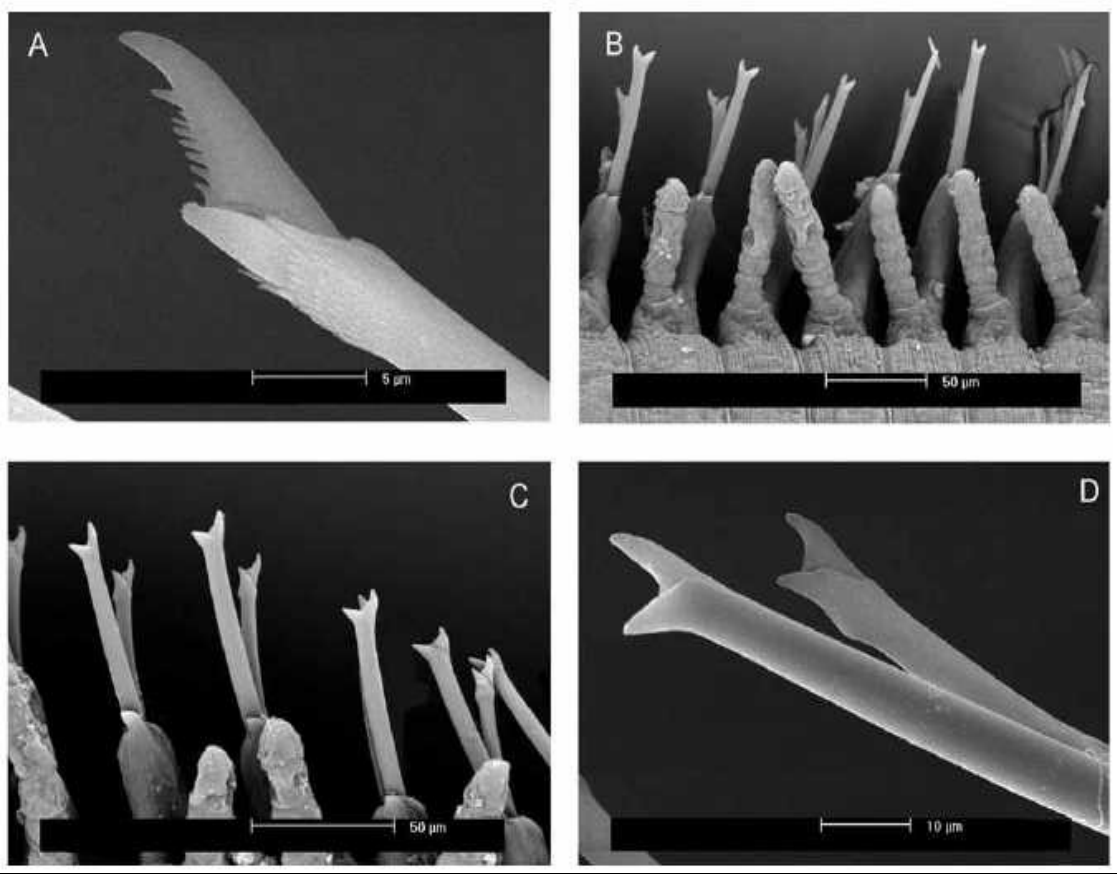
III

be **linked to the original** specimen
(which can be consulted if in doubt)

IV

be **retrievable**

Scanning Electron Microscope (SEM)



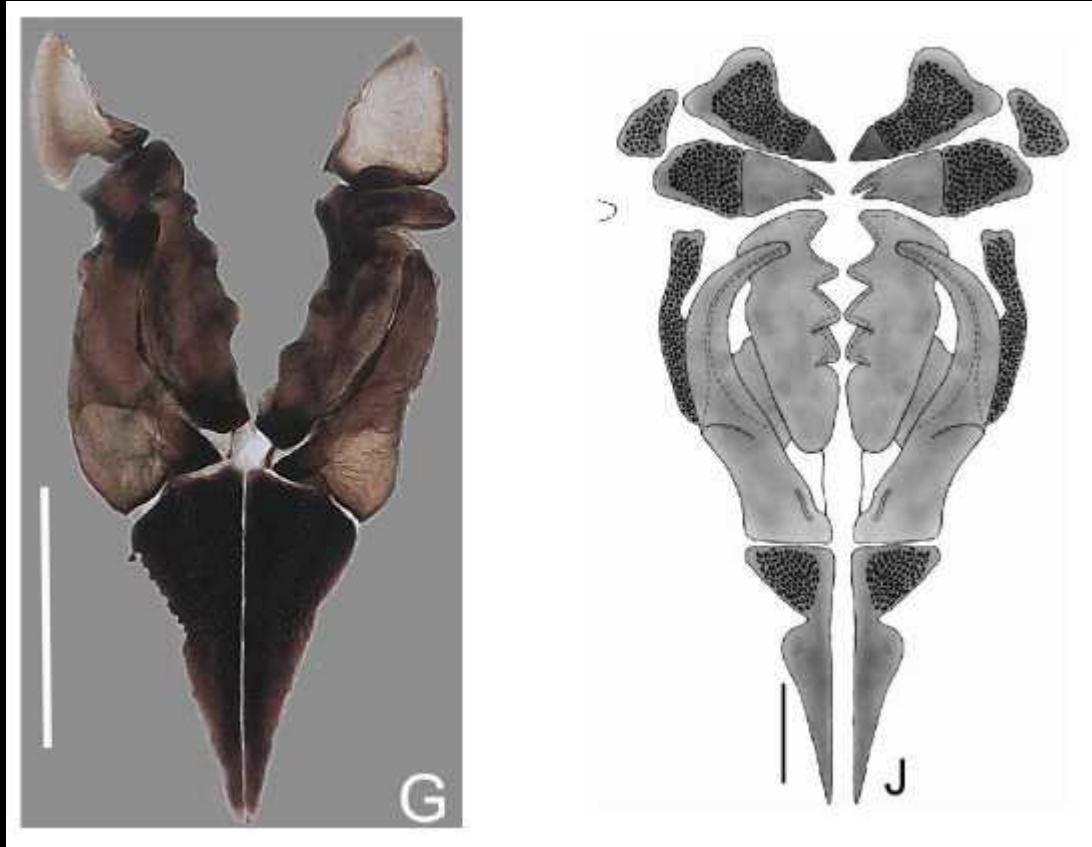
Micro-CT



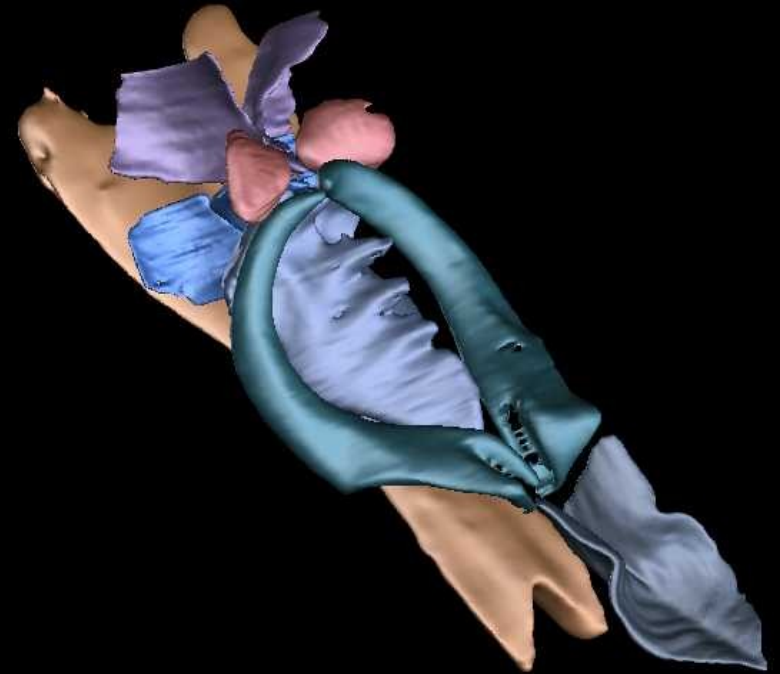
Source: Aguado et al. 2008, Zootaxa

Syllis gracilis (Annelida)

Light microscope and drawing



Micro-CT (surface model)



Lumbrineris latreilli (Annelida)

A cyberspecimen should...



provide information of the same **accuracy and reliability** as the physical specimen



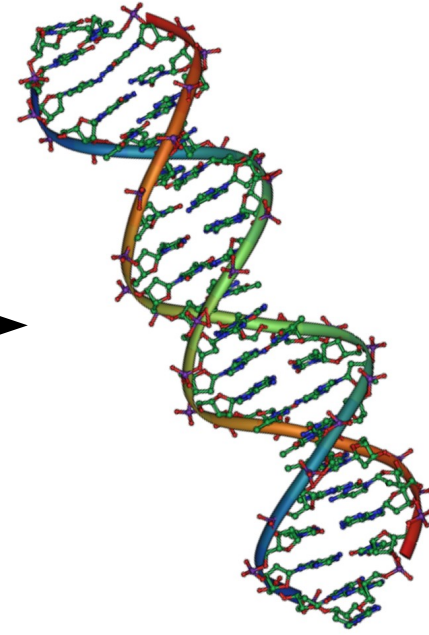
be created **without affecting** the **morphological, anatomical and molecular identity** of the physical specimen

III

be **linked to the original** specimen
(which can be consulted if in doubt)

IV

be **retrievable**



A cyberspecimen should...



provide information of the same **accuracy and reliability** as the physical specimen



be created **without affecting** the **morphological, anatomical and molecular identity** of the physical specimen



be **linked to the original** specimen
(which can be consulted if in doubt)

IV

be **retrievable**

A cyberspecimen should...



provide information of the same **accuracy and reliability** as the physical specimen



be created **without affecting** the **morphological, anatomical and molecular identity** of the physical specimen



be **linked to the original** specimen (which can be consulted if in doubt)

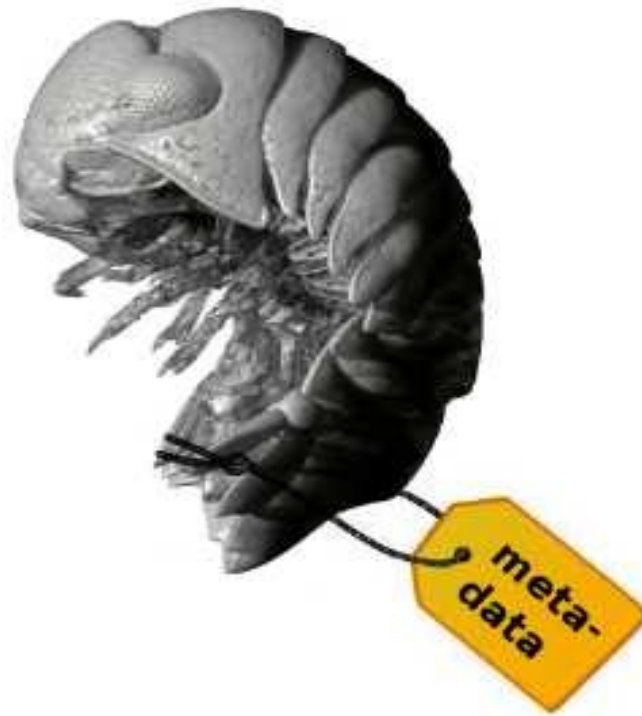


be **retrievable**

Curation

(= Data management)





metadata / annotation system

Purpose of metadata



retrievability and discoverability



retrievability and discoverability

promote re-use of data
-> avoid duplication of efforts





retrievability and discoverability

promote re-use of data
-> avoid duplication of efforts



data interpretation



retrievability and discoverability

promote re-use of data
-> avoid duplication of efforts



data interpretation

process of information creation
can be understood and repeated

assess fitness for use



retrievability and discoverability

promote re-use of data
-> avoid duplication of efforts



data interpretation

process of information creation
can be understood and repeated

assess fitness for use



location, accessibility and terms of use



retrievability and discoverability

promote re-use of data
-> avoid duplication of efforts



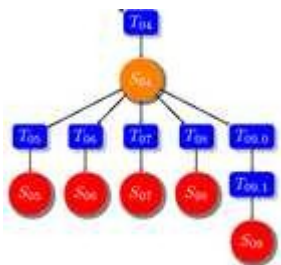
data interpretation

process of information creation
can be understood and repeated

assess fitness for use



location, accessibility and terms of use



relationship with other resources

What and how should I record?

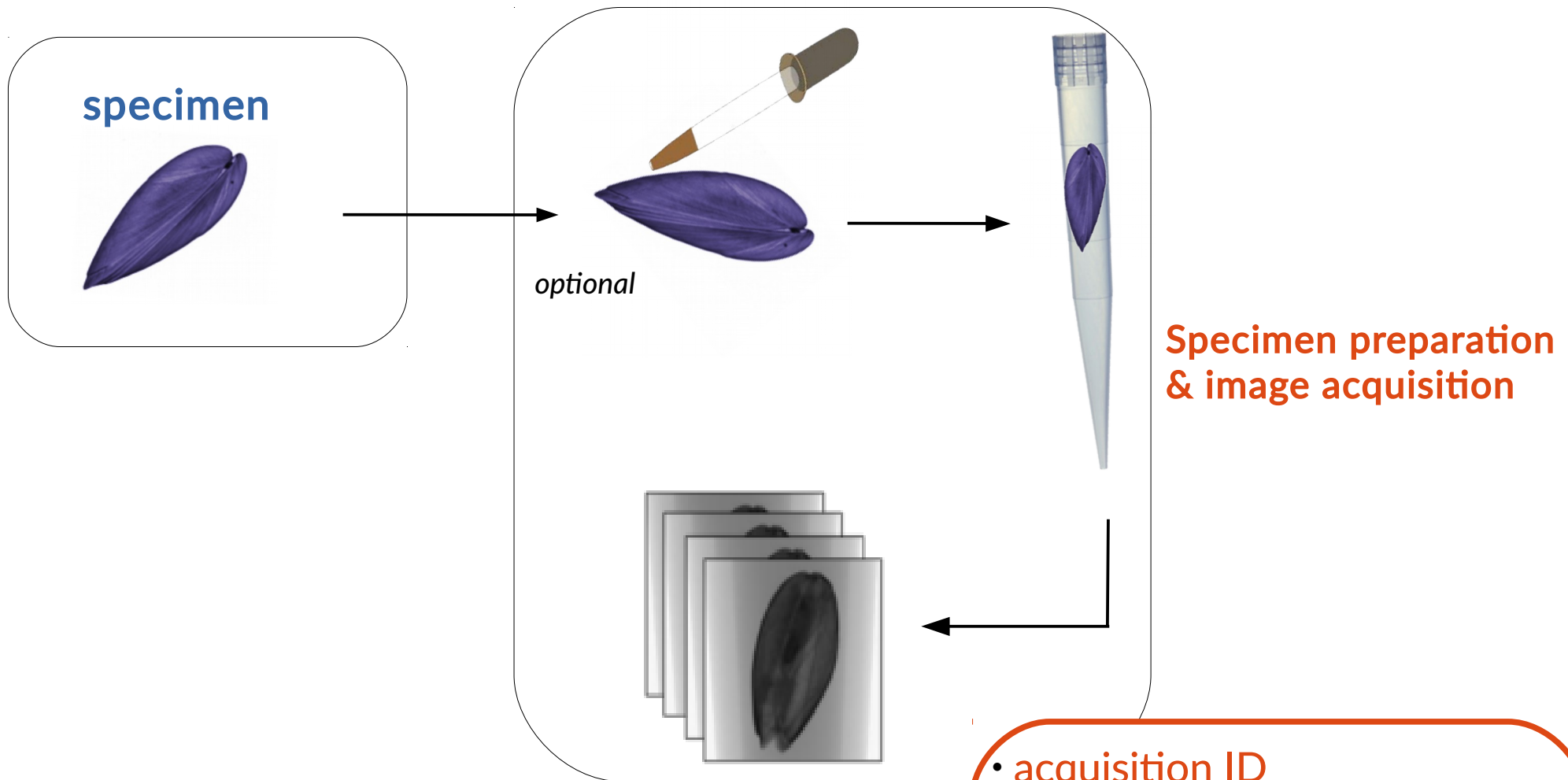
No agreed standards or guidelines
for natural history 3D data



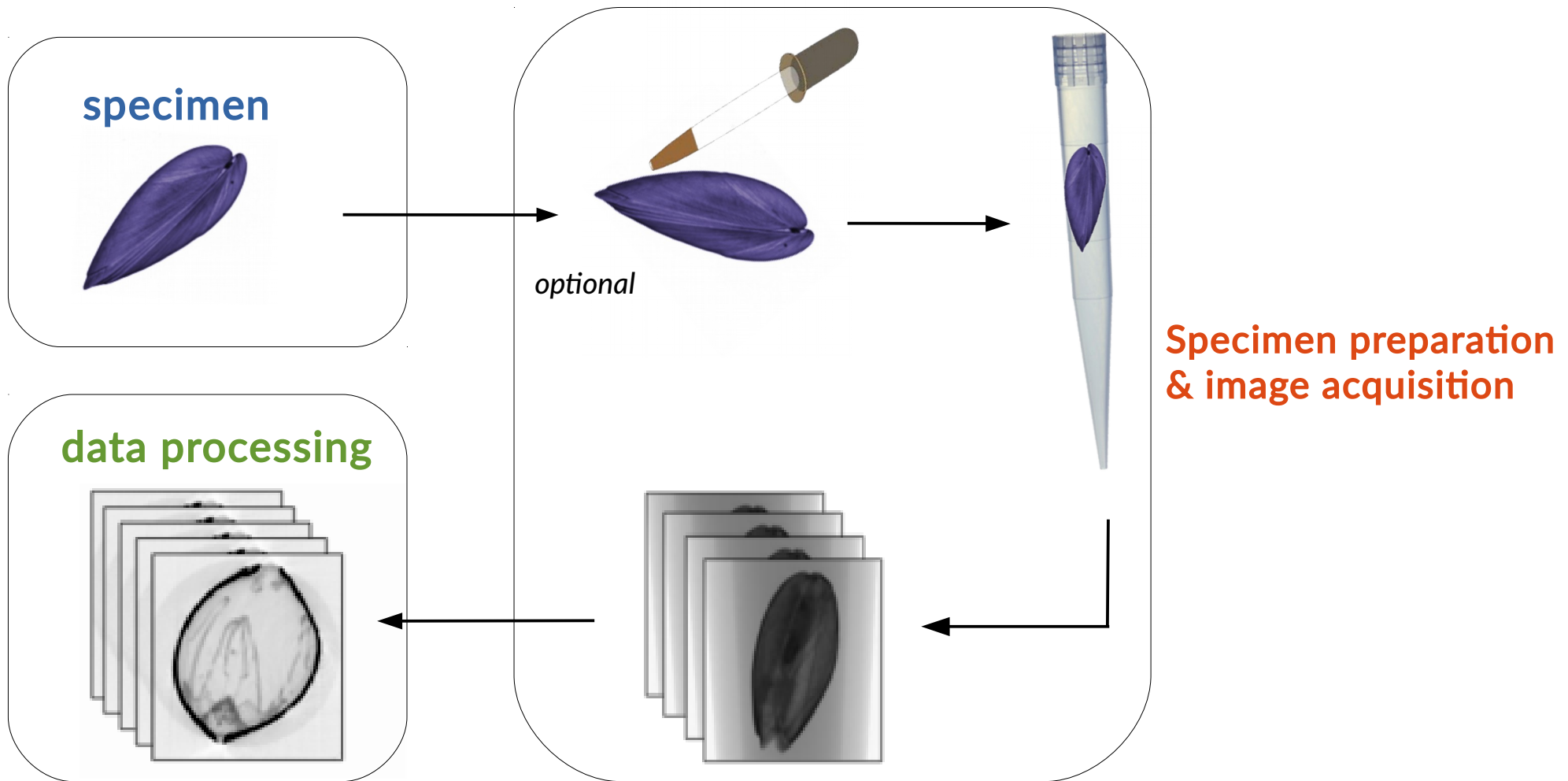
specimen



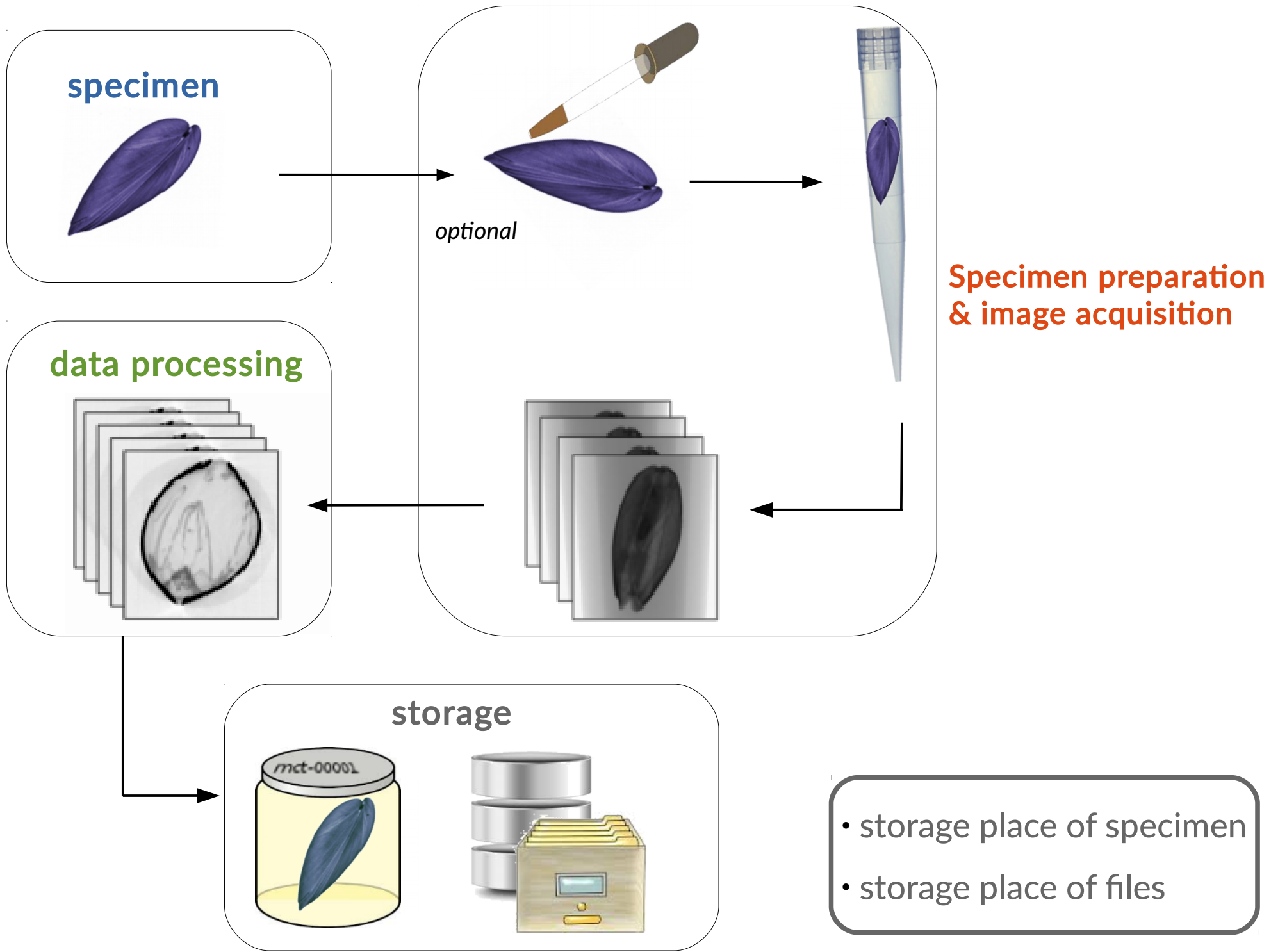
- Specimen ID
- Specimen provider
- Taxon name
- Specimen description
- Size (mm)
- Fixation medium
- Preservation medium

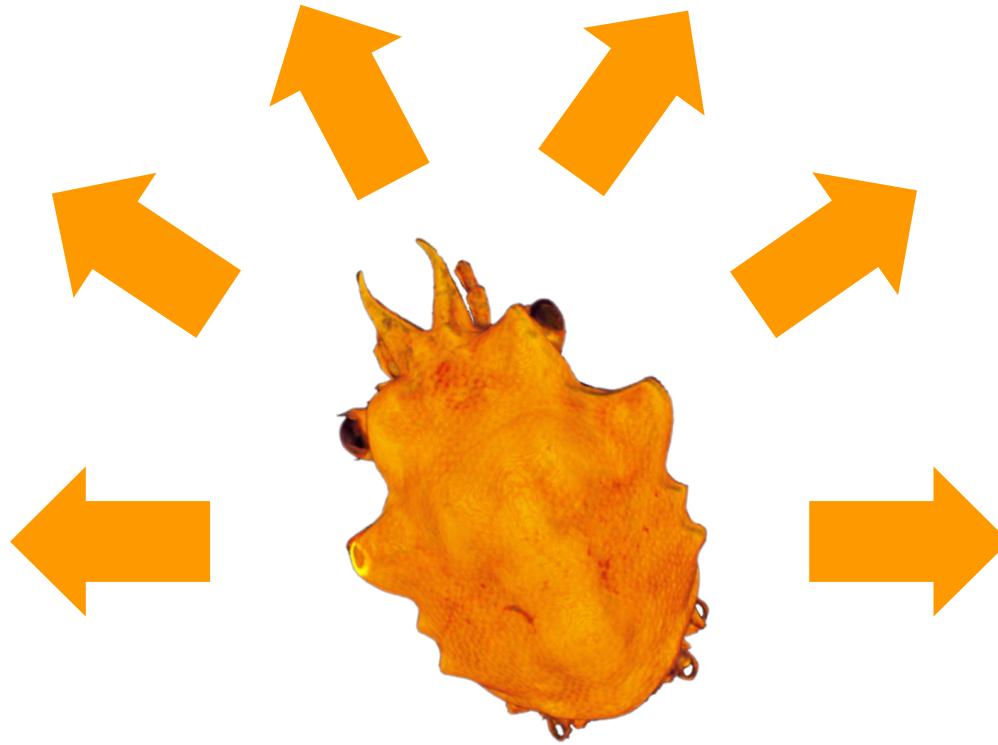


- acquisition ID
- [pre-treatment details]
- [sample holder & medium]
- person performing acquisition
- acquisition date
- scope of acquisition
- acquisition parameters



- scope of processing
- person processing data
- processing date
- processing steps / details



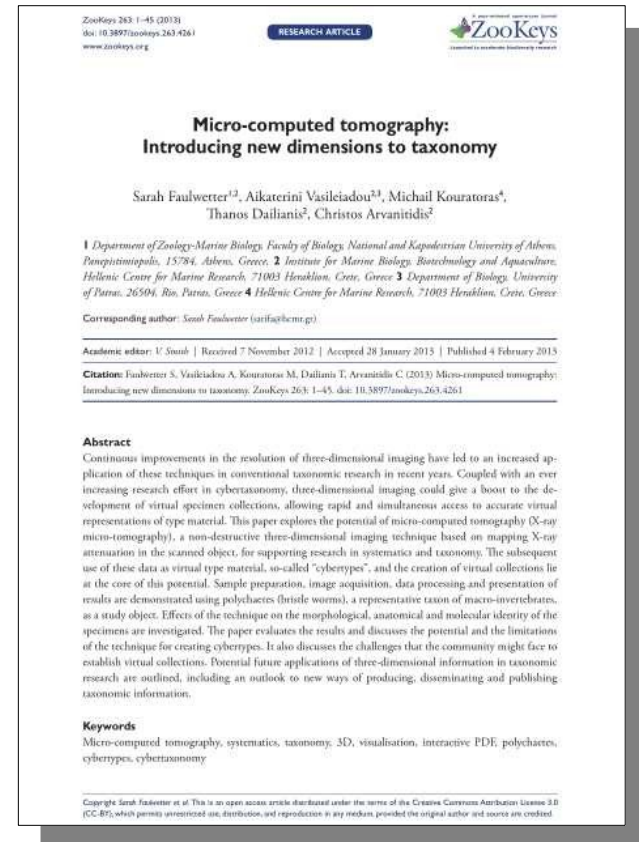


publication / dissemination

Purpose of data publication (archival, deposition)



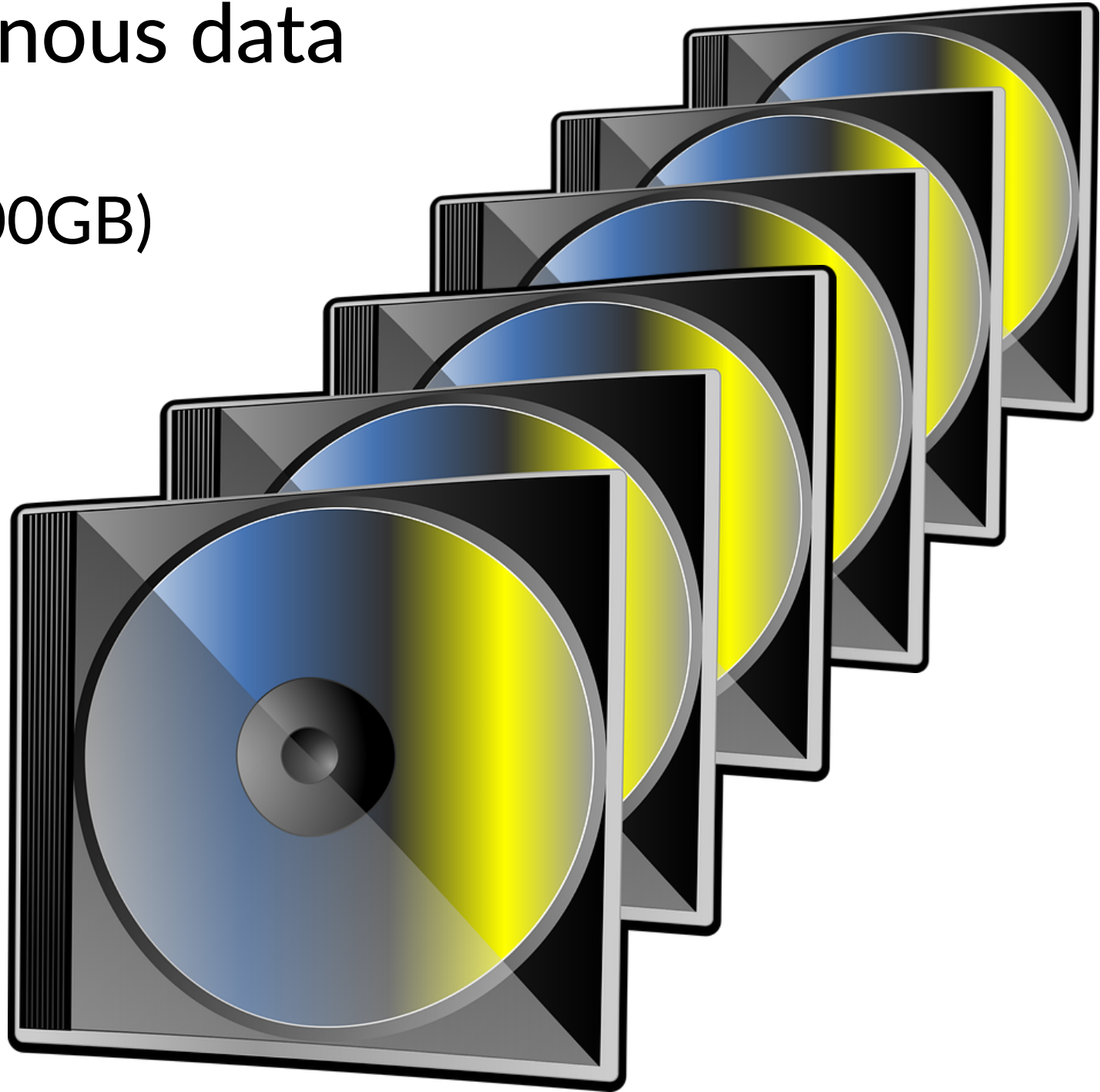
part of the
institute's mission



research data
(supplementary to paper)

Voluminous data

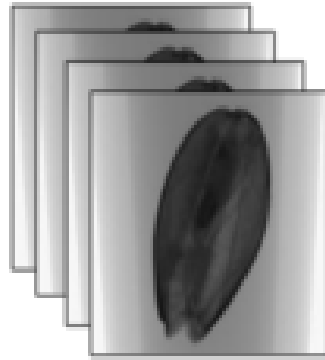
(up to 100GB)



What to publish?

What to publish?

Raw data



Processed data

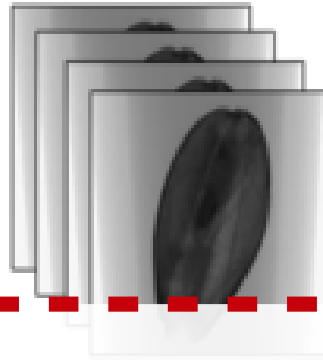


Steps & analyses



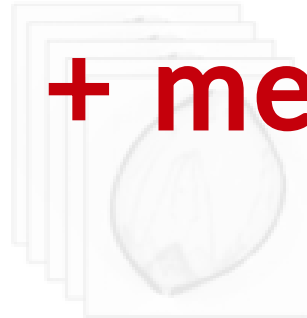
What to publish?

Raw data



Processed data

+ metadata!



Steps & analyses



PROCEEDINGS B

rsps.royalsocietypublishing.org

Perspective



Cite this article: Davies TG *et al.* 2017 Open data and digital morphology. *Proc. R. Soc. B* **284**: 20170194.
<http://dx.doi.org/10.1098/rspb.2017.0194>

Received: 30 January 2017

Accepted: 10 March 2017

Subject Category:

Morphology and biomechanics

Open data and digital morphology

Thomas G. Davies¹, Imran A. Rahman^{1,2}, Stephan Lautenschlager^{1,3}, John A. Cunningham¹, Robert J. Asher⁴, Paul M. Barrett⁵, Karl T. Bates⁶, Stefan Bengtson⁷, Roger B. J. Benson⁸, Doug M. Boyer⁹, José Braga^{10,11}, Jen A. Bright^{12,13}, Leon P. A. M. Claessens¹⁴, Philip G. Cox¹⁵, Xi-Ping Dong¹⁶, Alistair R. Evans¹⁷, Peter L. Falkingham¹⁸, Matt Friedman¹⁹, Russell J. Garwood^{5,20}, Anjali Goswami²¹, John R. Hutchinson²², Nathan S. Jeffery⁶, Zerina Johanson⁵, Renaud Lebrun²³, Carlos Martínez-Pérez^{1,24}, Jesús Marugán-Lobón²⁵, Paul M. O'Higgins¹⁵, Brian Metscher²⁶, Maëva Orliac²³, Timothy B. Rowe²⁷, Martin Rücklin^{1,28}, Marcelo R. Sánchez-Villagra²⁹, Neil H. Shubin³⁰, Selena Y. Smith¹⁹, J. Matthias Starck³¹, Chris Stringer⁵, Adam P. Summers³², Mark D. Sutton³³, Stig A. Walsh³⁴, Vera Weisbecker³⁵, Lawrence M. Witmer³⁶, Stephen Wroe³⁷, Zongjun Yin^{1,38}, Emily J. Rayfield¹ and Philip C. J. Donoghue¹

¹School of Earth Sciences, University of Bristol, Life Sciences Building, Tyndall Avenue, Bristol BS8 1TQ, UK

²Oxford University Museum of Natural History, Parks Road, Oxford OX1 3PW, UK

³School of Geography, Earth and Environmental Sciences, University of Birmingham, Birmingham B15 2TT, UK

⁴Museum of Zoology, University of Cambridge, Downing Street, Cambridge CB2 3EJ, UK

Where to publish?

Where to publish?



Not as supplementary data to paper

Where to publish?

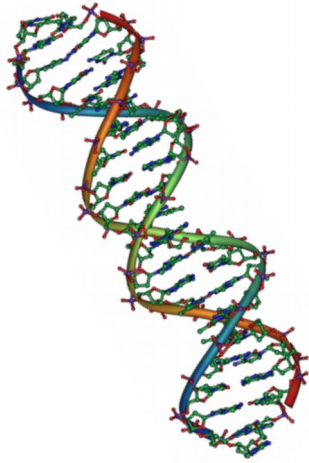


Not as supplementary data to paper



Data repository

Where to publish?



molecular biology



GENBANK



biogeography



Where to publish?



- Dryad
- Figshare
- GigaDB
- Github
- Zenodo
- MorphoBank
- MorphoDBase
- MorphoMuseuM
- MorphoSource

Where to publish?



- Dryad
- Figshare
- GigaDB
- Github
- Zenodo
- MorphoBank
- MorphoDBase
- MorphoMuseuM
- MorphoSource

Type of data (volume, surface, analyses...) ?

Size restriction?

Costs?

Type of license for re-use?

Globally unique identifier (DOI) offered?

Data papers

The screenshot shows the GigaScience journal homepage. At the top left is the logo for GigaScience, with 'GIGA' in a stylized font and 'SCIENCE' below it. To the right is a search bar with the text 'Search GigaScience for' and a 'Go' button. Below the logo is a navigation menu with links for 'Home', 'Articles', 'Authors', 'Reviewers', 'About this journal', and 'My GigaScience'. The main content area features a paragraph about the journal's mission to revolutionize data dissemination and a call to action: 'Get Credit for Your Data' and 'Publish a Data Note of your research in GigaScience'. On the right side, there are several buttons: 'Submit a manuscript', 'Register', 'Sign up for article alerts', 'Contact us', 'Follow us on Twitter', 'Find us on Facebook', and 'Support'.

The screenshot shows the 'Submission guidelines' page for Scientific Data. The page has a dark blue header with the journal title 'SCIENTIFIC DATA' and a search bar. Below the header is a navigation menu with links for 'Home', 'About', 'For Authors', 'For Referees', 'Advisory and Editorial Board', 'Open Access', and 'FAQ'. The main content area is titled 'Submission guidelines' and contains a paragraph explaining the purpose of the guidelines. Below this is a list of links for various aspects of the submission process, including 'Scope guidelines', 'Preparing and submitting a Data Descriptor manuscript', 'Templates', 'Cover letter', 'Data deposition', 'Format of Data Descriptor manuscripts', 'Submitting experimental metadata', 'Statistical guidelines', 'Chemical and biological nomenclature and abbreviations', 'Gene nomenclature', 'Characterization of chemical and biomolecular materials', 'References', and 'Equations'. On the right side, there is a section titled 'Scientific Data is accepting submissions' with a 'Submit manuscript' button, and another section titled 'Scientific Data Updates' with a list of recent updates and dates.





No metadata standards exist

Multitude of data repositories



Publication = time consuming & difficult due to data volume

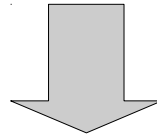


No metadata standards exist

Multitude of data repositories



Publication = time consuming & difficult due to data volume



**Many datasets not published
Online datasets not retrievable**

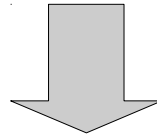


No metadata standards exist

Multitude of data repositories



Publication = time consuming & difficult due to data volume



Many datasets not published
Online datasets not retrievable

**Common registry /
metadata repository**